

# Improved Power Spectrum Estimation for RR-Interval Time Series

B. S. Saini, Dilbag Singh, Moin Uddin, and Vinod Kumar

**Abstract**—The RR interval series is non-stationary and unevenly spaced in time. For estimating its power spectral density (PSD) using traditional techniques like FFT, require resampling at uniform intervals. The researchers have used different interpolation techniques as resampling methods. All these resampling methods introduce the low pass filtering effect in the power spectrum. The lomb transform is a means of obtaining PSD estimates directly from irregularly sampled RR interval series, thus avoiding resampling. In this work, the superiority of Lomb transform method has been established over FFT based approach, after applying linear and cubicspline interpolation as resampling methods, in terms of reproduction of exact frequency locations as well as the relative magnitudes of each spectral component.

**Keywords**—HRV, Lomb Transform, Resampling, RR-intervals.

## I. INTRODUCTION

SINCE the RR-interval series is non-uniformly sampled, for estimating its PSD using Fast Fourier Transform (FFT), requires re-sampling. For re-sampling, most analysts use different interpolation methods [1-4], [6-8] but all these methods alter the frequency contents of the signal due to the nonlinear low pass filtering effect [14]. If the time series contains inappropriate or missing samples i.e. in heart rate time series, PSD estimates can be severely affected and in such cases resampling is further complicated by the need to infer probable values as replacements.

Methods for PSD estimation based directly on irregularly sampled time series have been used, though not in HRV analysis, since at least 1976 [5]. Laguna et al. [4] proposes and recommended the Lomb-Scargle transform [5], [8], [9], [13] in Heart Rate Variability (HRV) studies, thus entirely avoided the problems associated with re-sampling. But after an exhaustive literature survey on ECG spectral estimation, we observed that numbers of studies are silent on the approach of how and in what extent the various interpolation methods affect the PSD estimates [1-3], [14]. Also the adequate justification of the technique adopted is usually lacking.

The authors are thankful to the MHRD for providing us the financial grant under TEQIP program for carrying out this work.

B. S. Saini (corresponding author phone: 919872660337; fax: 910181-2690332; e-mail: sainibss@rediffmail.com), S. Dilbag Singh and Moin Uddin are with the National Institute of Technology, Jalandhar, 144011, India (e-mails: drdilbag@gmail.com, director@nitj.ac.in).

Vinod Kumar is with the Electrical Engineering Department, Indian Institute of Technology, Roorkee, 247667, India (e-mail: vinoodfee@iitr.ernet.in).

Consequently, a need was felt to carry out a detailed study on implications of various re-sampling methods and Lomb transform method on PSD estimates of HRV.

In this paper, uniformly and non-uniformly sampled test signals for known set of frequency components in the autonomic band from 0 to 0.5 Hz are used and sampled (i) uniform sampling time of 250 msec (ii) non-uniform sampling time-base, represented by actual RR-interval time series from a healthy young adult. Firstly, the spectral estimation was done using FFT after applying two different methods of interpolation (i) Linear Interpolation (ii) Cubicspline Interpolation, for re-sampling. Further, Press-Rybicki algorithm [8] for Lomb transform has been used to extract its simplicity and speed. The spectrum estimates obtained using FFT with different interpolation as well as using the Lomb transform are not found to be ideal estimates. However, the Lomb transform has shown superior performance in terms of power spectrum estimation, as compared to the FFT based approach when evaluation was done on synthetic signals. Further it is observed that, the spectral peaks of FFT based PSD estimates get dislocated towards low frequency regions and also their strengths have been attenuated differently as compare to that of Lomb transform method.

## II. CURRENT METHODS IN USE

Traditionally the time and frequency domain measures were widely accepted methods for HRV analysis. For the spectral estimation of RR-interval series in the frequency domain, the FFT and autoregressive (AR) modeling [1], [2], submitted for publication [10], [12] are most commonly used. Before applying FFT or AR technique to a HRV signal, it is necessary to resample the signal at 4 Hz by using interpolation submitted for publication [10], [12]. The FFT based spectrum includes the entire signal variance, irrespective of whether its frequency components appear as specific spectral peaks or as non-peak broadband powers. On the other hand, AR method uses raw data to identify a best-fitting model and from which spectrum is derived. A fixed model order has been proposed as a practical rule for AR spectral estimation [2].

The Lomb Periodogram method of obtaining the power spectrum does not require re-sampling and for this feature it has been used for the analysis for HRV signals [15]. It allows examining frequencies higher than the mean Nyquist frequency, i.e., the Nyquist frequency one would obtain if the same number of data points were evenly sampled at the

average sampling rate. In this paper, the analysis was carried out on re-sampled RR interval series represented as a function of time using FFT and on non-uniformly sampled RR-interval series.

### III. PROCEDURE

We choose to present simulated test signals, instead of experimental, data for this analysis in order to have control over the frequency variations. Two test signals are generated, first test signal  $x_1(n)$  is representing the evenly sampled data and second i.e.  $x_{11}(n)$  and  $x_{12}(n)$  representing the unevenly sampled data sequence, using the two actual RR-interval records as sampling instants for two subjects by using (1), for two different set of frequency components, FIRST SET:  $f_1=0.008$  Hz,  $f_2=0.09$  Hz,  $f_3=0.13$  Hz,  $f_4=0.25$  Hz,  $f_5=0.4$  Hz and SECOND SET:  $f_1=0.01$  Hz,  $f_2=0.12$  Hz,  $f_3=0.20$  Hz,  $f_4=0.27$ ,  $f_5=0.33$  Hz.

The non-uniformly sampled test signals were transformed into evenly sampled signals by different interpolation methods for obtaining the power spectrum using FFT of 1024 windowed data points.

$$x_n = A \begin{bmatrix} \sin(2\pi f_1 n \Delta t) + \sin(2\pi f_2 n \Delta t) \\ + \sin(2\pi f_3 n \Delta t) + \sin(2\pi f_4 n \Delta t) \\ + \sin(2\pi f_5 n \Delta t) \end{bmatrix} \quad (1)$$

where sampling frequency  $f_s=1/\Delta t=4$ Hz for  $s=1,2,\dots,5$ ,  $A$  is the amplitude and  $n$  is the time-index.

Further the PSD estimate is obtained by using Lomb transform method [6]. This method is based on the definition of the discrete Fourier transform (DFT), for unevenly sampled signals  $x(t_n)$ , for  $(n=1, 2, \dots, N)$  using (2):

$$DFT(\omega) = \sum_{n=1}^N x(t_n) e^{-j\omega t_n} \quad (2)$$

where  $\omega = 2\pi f$  is the angular frequency (if  $(t_{n+1}-t_n)$  is a constant and equal to 1, the expression for evenly sampled series was obtained).

Equation (2) has been used to define the transform for unevenly sampled series. However, the resulting transform suffers from an important limitation i.e. not invariant to time translations. For this reason Lomb modified the definition of transform and the Lomb transform [15] of a non-uniformly sampled real-valued data sequence  $\{x(t_n)\}$  of length  $N$  as defined using (3)

$$P_x(f) = \frac{1}{2\sigma^2} \left\{ \frac{\left[ \sum_{n=1}^N (x(t_n) - \bar{x}) \cos(2\pi f(t_n - \tau)) \right]^2}{\sum_{n=1}^N \cos^2(2\pi f(t_n - \tau))} + \frac{\left[ \sum_{n=1}^N (x(t_n) - \bar{x}) \sin(2\pi f(t_n - \tau)) \right]^2}{\sum_{n=1}^N \sin^2(2\pi f(t_n - \tau))} \right\} \quad (3)$$

where  $\bar{x}$  and  $\sigma^2$  are the mean and variance of the series  $\{x(t_n)\}$ ,  $\tau(f)$  is a frequency dependent time delay, defined to make the transform insensitive to time shift [4], [8], and is computed using (4)

$$\tan(4\pi f \tau) = \frac{\sum_{n=1}^N \sin(4\pi f t_n)}{\sum_{n=1}^N \cos(4\pi f t_n)} \quad (4)$$

### IV. RESULTS

Generation of test signals corresponding to subject-I and subject -II for first set of frequency components ( $f_1=0.008$ Hz,  $f_2=0.09$ Hz,  $f_3=0.13$ Hz,  $f_4=0.25$  Hz,  $f_5=0.4$ Hz)

Uniformly sampled test signal  $x_1(n)$  is generated for  $f_s=4$  Hz and  $A=2$  using (1) and is shown in Fig. 1 (a). The PSD plot of this simulated signal is shown in Fig. 2 (a). Its power spectrum shows five distinct spectral peaks at  $f_1, f_2, f_3, f_4$ , and  $f_5$  respectively, which represents high resolution and zero spectral leakage. The values of power in the five selected frequency bands corresponding to these frequency components are given in Table I which maintains approximately same magnitude in the entire power spectrum.

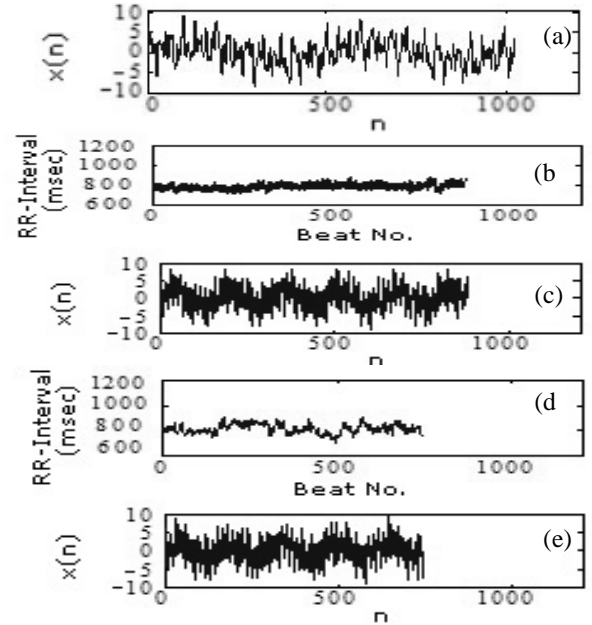


Fig. 1 Test Signals tachograms (a) Uniformly sampled test signal  $x_1(n)$  (b) Time base-I (c) Non-uniformly sampled test signal  $x_{11}(n)$  using time base-I of subject-I (d) Time base-II (e) Non-uniformly sampled test signal  $x_{12}(n)$  using time base-II of subject-II

Non-uniformly sampled test signals  $x_{11}(n)$  and  $x_{12}(n)$  are generated, by using the sampling instants of RR-intervals series shown in Fig. 1 (b) and (d), using (1) are shown in Fig. 1 (c) and (e) respectively.

#### A. PSD Estimation using FFT

Prior to FFT spectral estimation it is necessary to resample the signals  $x_{11}(n)$  and  $x_{12}(n)$  at equal intervals using different interpolation techniques [10]. These are as follows:

(i) Linear Interpolation: After applying this method of interpolation on non-uniformly sampled test signal  $x_{11}(n)$  shown in Fig. 1 (c), the power spectrum shown in Fig. 2 (b) is obtained. This plot shows that the spectral peaks are deviated towards the low frequency regions i.e. 0.007 Hz, 0.07 Hz, 0.10 Hz, 0.19 Hz and 0.3 Hz in the plot instead of remain

fixed as specified in the test signal. This leads to the distortion in the power spectrum due to the re-sampling operation. Moreover the values of power in  $P_{f_2}$ ,  $P_{f_3}$ ,  $P_{f_4}$  and  $P_{f_5}$  frequency bands as given in Table I are much less than that of uniformly sampled signal.

(ii) Cubicspline Interpolation: The results after applying this method of interpolation are: (A) The spectral leakage is observed in the PSD plot shown in Fig. 2 (c). (B) The spectral peaks are displaced towards the low frequency region and their strength has also been attenuated. (C) The values of power as per Table I, are further reduced from the values obtained using the above method of interpolation. Thus Cubicspline Interpolation leads to the higher attenuation of the spectral components but the deviation in the spectral peaks remains same as compare to Linear Interpolation method.

**B. PSD Estimation using Lomb Transform**

The PSD estimates of non-uniformly sampled test signals  $x_{11}(n)$  and  $x_{12}(n)$  are now obtained by using Lomb transform without applying any interpolation method for re-sampling, using (3) and (4). The PSD plots of test signal  $x_{11}(n)$  (Fig. 1 (c)) is shown in Fig. 2 (d). This plot reproduces five distinct spectral peaks  $f_1, f_2, f_3, f_4,$  and  $f_5$  exactly at the same locations as defined in the test signal using (1).

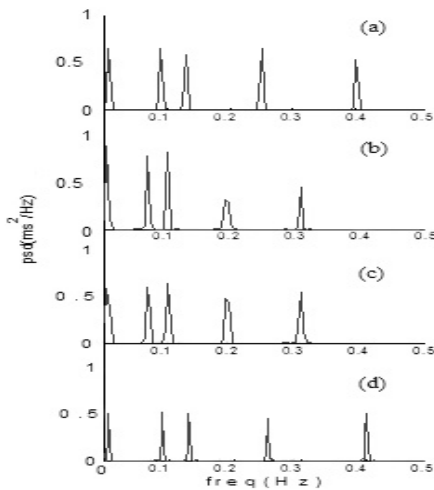


Fig. 2 PSD plots of test signal  $x_1(n)$  &  $x_{11}(n)$  using (a) Uniformly sampled test signal  $x_1(n)$  (b) Test signal  $x_{11}(n)$  after Linear interpolation (c) Test signal  $x_{11}(n)$  after Cubicspline interpolation (d) Test signal  $x_{11}(n)$  after Lomb transform

Hence, no distortion is observed in its PSD plot. The power values for the test signal  $x_{11}(n)$  after applying Lomb transform as shown in Table I are almost similar to that obtained for uniformly sampled test signal. This signifies that PSD estimates which are obtained from this method are free from low pass filtering effects, but which are predominant in all the above mentioned interpolation methods.

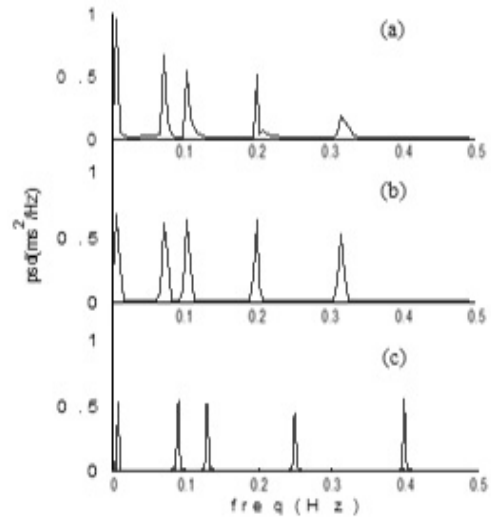


Fig. 3 PSD plots of test signal  $x_{12}(n)$  using (a) Linear Interpolation (b) Cubicspline Interpolation (c) Lomb Transform

Further, this study was extended by using sampling instants of another actual RR-interval time series i.e. for test signal  $x_{12}(n)$ . After applying Linear and Cubicspline methods of interpolation, the PSD plots are shown in Fig. 3(a) and 3(b), indicating higher spectral leakage, deviation and attenuation of the spectral components compared to that of Lomb based PSD plot. The study was extended to several set of frequency components and same observations were repeated.

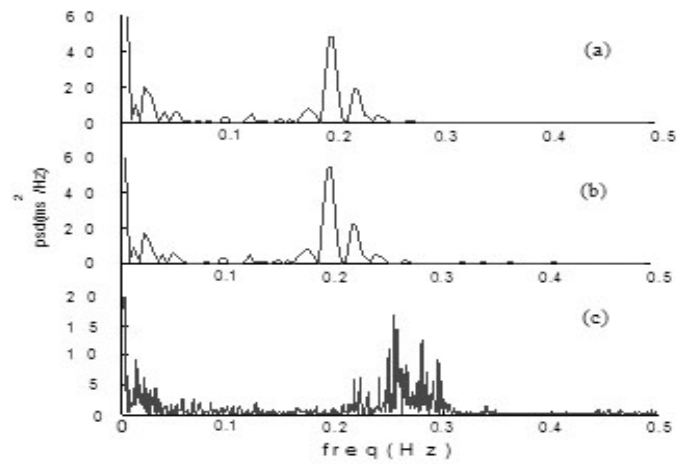


Fig. 4 PSD plots of actual series of data (a) Linear Interpolation (b) Cubicspline Interpolation (c) Lomb Transform

Thus in HRV analysis using FFT, the main source of an error is due to the interpolation, used for re-sampling the unevenly spaced heart rate series. Hence the Lomb transform method which requires no re-sampling is found to be more accurate method for HRV analysis. In addition to the simulated test signals all the above-discussed methods of PSD

TABLE I  
POWER VALUES OF TEST SIGNALS FOR FIRST SET OF FREQUENCY COMPONENTS

Frequency Bands	Subject I				Subject II		
	Uniformly sampled data without any interpolation	Linear Interpolation	Cubicspline Interpolation	Lomb Periodogram	Linear Interpolation	Cubicspline Interpolation	Lomb Periodogram
P <sub>f1</sub>	0.9996	1.0013	1.0766	0.9339	1.0039	1.0037	0.9353
P <sub>f2</sub>	1.0000	0.0201	0.0123	1.0000	0.2341	0.0807	0.9947
P <sub>f3</sub>	0.9963	0.0173	0.0016	0.9835	0.0425	0.0161	1.0000
P <sub>f4</sub>	1.0001	0.0063	0.0003	0.9676	0.0116	0.0062	0.9644
P <sub>f5</sub>	0.9898	0.0020	0.0002	0.9825	0.0003	0.0003	0.9899

P<sub>f1</sub>=0.000Hz-0.01563Hz, P<sub>f2</sub>=0.08203Hz-0.09766Hz, P<sub>f3</sub>=0.1211Hz-0.1367Hz, P<sub>f4</sub>=0.2422Hz-0.2578Hz, P<sub>f5</sub>=0.3906Hz-0.4064Hz

estimates are also applied on real data recordings. After analyzing the PSD plots shown in Fig. 4 (a), (b) and (c) it is verified that the spectrum obtained using Lomb transform is more authentic. Thus FFT based methods can lead to wrong diagnosis in clinical applications if appropriate re-sampling methods are not chosen.

#### IV. CONCLUSION

In the PSD plots obtained after Linear and Cubicspline interpolations it is noticed that there is a shifting of spectral peaks towards the low frequency region. In this way we proved that the re-sampling operation affects the power spectrum estimation. By using the Lomb transform method we compute the PSD of RR-interval series without any interpolation and found that this method generates better results which closely matches with that of uniformly sampled signal. Further, these observations have been supported by results on actual RR-interval records from volunteers in terms of frequency reproduction as well as their relative magnitudes in the frequency range of interest.

#### ACKNOWLEDGMENT

The authors are thankful to the Dept. of Electronics & Communication Engineering and Dept. of Instrumentation & Control Engineering for providing the necessary facilities to carry out this research work.

#### REFERENCES

- [1] S. Akselrod, D. Gordon, F. A. Ubel, S. C. Shanon, A. C. Barger and R. J. Cohen, "Power spectrum analysis of heart rate fluctuation: A quantitative probe of beat-to-beat cardiovascular control," *Science*, vol. 213, pp. 220 – 222, 1981.
- [2] A. Boardman, F. S. Schindwein, A. P. Rocha and A. Leite., "A study on optimum order of autoregressive models for heart rate variability," *Physiol. Meas.*, vol. 23, pp. 325–36, 2002.
- [3] Mark Ebden, "A Comparison of HRV Techniques: The Lomb Periodogram versus The Smoothed Pseudo Wigner-Ville Distribution," *A report submitted to Prof. Lionel Tarassenko*, November 19, 2002, Available: www.robots.ox.ac.uk/~mebden/reports/report3.doc,
- [4] P. Laguna, G. B. Moody and R. G. Mark, "Power spectral density of unevenly sampled data by least-square analysis: performance and application to heart rate signals," *IEEE Transactions on Biomedical Engineering*, pp. 698-715, 1998.

- [5] N. R. Lomb, "Least-squares frequency analysis of unequally spaced data," *Astrophysical and space science*, vol. 39, pp. 447-462, 1976.
- [6] "Lomb Periodogram," *from a website* Available: <http://www.cbi.dongnocchi.it/glossary/Lomb.html>.
- [7] M. Merri, D. C. Arden, J. G. Motley and E. L. Titlebaum, "Sampling frequency of the electrocardiogram for spectral analysis of heart rate variability," *IEEE Transactions on Biomedical Engineering*, vol. 37, pp. 99 - 106, 1990.
- [8] W. H. Press, S. A. Teukolsky, W. T. Vetterling, B. P. Flannery, *Numerical Recipes in C++*, Cambridge University Press, 2<sup>nd</sup> Edition, 1982.
- [9] Scargle J.D., "Studies in astronomical time series analysis II: Statistical aspects of spectral analysis of unequally spaced data," *Astrophysical Journal*, vol 263, pp. 835-853, 1982.
- [10] B. S. Saini, Dilbag Singh, "Comparison of re-sampling methods in the spectral analysis of RR-interval series data (Submitted for publication)" *a paper submitted in the IETE Journal of Research*, July 18, 2008.
- [11] Dilbag Singh, B. S. Saini, "Heart rate variability-A bibliographical survey," *IETE Journal of research on Biomedical Signal and Image Processing*, vol. 54, no. 3, pp. 209-216, 2008.
- [12] Dilbag Singh, Vinod Kumar, S. C. Saxena and K. K. Deepak, "Effects of RR segment duration on HRV spectrum estimation," *Physiol. Meas.*, vol. 25, pp. 721–735, 2004.
- [13] K. S. Shin, H. Minamitani, S. Onishi, H. Yamazaki, M. H. Lee, "The direct power spectrum estimation of unevenly sampled cardiac event series," in *Proceedings of the 16th Annual International Conference of the IEEE EMBS*, 1994, vol. 2, pp. 1254-1255.
- [14] "Task Force of the European Society of Heart rate variability – standards of measurement, physiological interpretation and clinical use," *European Heart Journal*, vol. 17, pp. 354 – 381.
- [15] T. Thong, J. McNames, M. Aboy and B. Oken, "Averaged Lomb periodogram for nonuniform sampling," *International Conference Biosignal 04*, 2004.



**B. S. Saini** was born in Jalandhar, India, in 1970. He received his B.Tech degree in Electronics & Communication Engineering from Gulbarga University, India in 1994 and then obtained his M.Tech degree in Electronics & Communication Engineering from Kurukshetra University in 1996.

Presently, he is pursuing his Ph.D. in the area of heart rate variability from NIT Jalandhar, where he is also serving as Sr. Lecturer in Electronics & Communication Engineering Department since 1997.



**Dilbag Singh** was born in Adyana (Panipat), on February 26, 1969. He received the B.E. (Hons.) degree in Electrical Engg from Punjab Engineering College, Chandigarh, and M.E. degree in Control & Guidance from the University of Roorkee, and the Ph.D. degree in Engineering from the Indian Institute of Technology Roorkee in 1991, 1993, and 2004 respectively. The Ph.D. degree thesis was developed at the Instrumentation & Signal Processing Laboratory of

the Electrical Engineering Department under the direction of Vinod Kumar, S. C. Saxena and K. K. Deepak (AIIMS).

After a brief stint at Goodyear India Limited, Faridabad, in September 1994 he joined the Department of Instrumentation and Control Engineering at of the Dr. B. R. Ambedkar National Institute of Technology, Jalandhar, and since 2005 has been Assistant Professor of Instrumentation & Control Engineering there, where he is teaching UG/PG courses related to biomedical signal processing and instrumentation. His professional research interests are in signal processing, in particular applied to biomedical applications.



**Vinod Kumar** obtained his B.Sc. (Electrical Engineering) Hons Degree from Punjab University in 1973, ME (Measurement & Instrumentation) Hons and Ph.D. Degree from University of Roorkee in 1975 and 1984 respectively. He joined the Electrical Engineering Department of University of Roorkee (presently, IIT Roorkee) in 1975 and is presently Professor in Electrical Engineering Department of Indian Institute of Technology Roorkee.

He has guided 12 doctoral and more than 70 Master's theses and has more than 125 research publications in internationally reputed Journals and Conference proceedings. He has undertaken large number of consultancy and sponsored projects from industries and government departments. He has also conducted several courses, workshops for the benefit of faculty and field engineers. He served the institute as Associate Dean Academic, Director/Coordinator AVRC and Coordinator Information Super Highway Centre. Presently, he is Head, Continuing Education Centre and Coordinator, Quality Improvement Program Centre. His areas of interest are Measurement and Instrumentation, Medical Instrumentation, Medical Image Processing, Digital Signal Processing and Telemedicine.

Prof. Vinod holds membership of many professional bodies. He is a fellow of the Institute of Engineers (I), Institution of Electronics and Telecommunication Engineers and Biomedical Engineering Society of India. He is a Senior Member of IEEE, USA. He has many honors and awards to his credit, namely IETE - K S Krishna Memorial Award, Khosla Cash Award & Prize, Khosla Cash Prize, Khosla Annual Research Prize, Certificate of Merit for research papers by Institution of Engineers (I), IETE - R S Khandpur Gold Medal for life-time achievements and outstanding contribution at national / international level in the field of 'Medical Instrumentation'.



**Moin Uddin Director** Dr B R Ambedkar National Institute of Technology, Jalandhar (India). He obtained his B.Sc. Engineering and M.Sc. Engineering (Electrical) from AMU, Aligarh in 1972 and 1978 respectively. He obtained his Ph. D degree from University of Roorkee, Roorkee in 1994.

Before joining NIT, Jalandhar, he has as Head Electrical Engineering Department and Dean Faculty of Engineering and Technology at Jamia Millia Islamia (Central University) New Delhi. He supervised 14 Ph. D thesis and more than 30 M.Tech dissertations. He has published more than 40 research papers in reputed journals and conferences. Prof. Moin Uddin holds membership of many professional bodies. He is a Senior Member of IEEE.