

Coherence Analysis for Epilepsy Patients: An MEG Study

S. Ge, T. Wu, HY. Tang, X. Xiao, K. Iramina, and W. Wu

Abstract—It is crucial to quantitatively evaluate the treatment of epilepsy patients. This study was undertaken to test the hypothesis that compared to the healthy control subjects, the epilepsy patients have abnormal resting-state connectivity. In this study, we used the imaginary part of coherency to measure the resting-state connectivity. The analysis results shown that compared to the healthy control subjects, epilepsy patients tend to have abnormal rhythm brain connectivity over their epileptic focus.

Keywords—Coherence, connectivity, resting-state, epilepsy

I. INTRODUCTION

FUNCTIONAL maps created with active state depend on subject's cooperation and on study paradigms that are capable of reliably activating the brain area of interest.

Instead of mapping brain area using activation methods, functional maps can also be created by measuring the functional connectivity under resting-state. The underlying rationale is that disconnected tissue does not participate in the brain interactions occurring between brain areas and would show abnormal functional connectivity. Temporal connectivity under resting-state are presumed to reflect intrinsic functional connectivity and have been demonstrated across several distinct networks serving critical functions like vision, hearing, language, and salience detection [1]-[3]. One such network that has been studied extensively is the default mode network (DMN), a set of brain regions that typically deactivate during performance of cognitive tasks [4]. Detection of temporal connectivity in resting-state network would provide more compelling evidence for the existence of a default mode network, and enhance the understanding of neural activity in baseline states, thereby refining interpretations of "activation" and "deactivation" in functional imaging studies [5]. Some studies demonstrated that the strength of resting-state functional connectivity reflects the strength of structural connectivity [6][7].

Some pioneering electroencephalographic (EEG) and magnetoencephalography (MEG) studies assessing functional connectivity in patients with brain lesions using coherence found highly significant decrease in coherence in lesion patients during the resting state [8][9]. However, since the

traditional coherence method is sensitive to volume conduction artifact [10], functional connectivity is easily overestimated. Recently, Nolte et al. [11] introduced imaginary part of coherence to overcome such problem.

In this study, we tried to use imaginary part of coherence to compare the functional connectivity in epilepsy patients and healthy control subjects.

II. SUBJECTS AND METHODS

A. Patients and Healthy Control Subjects

10 epilepsy patients and 10 healthy control subjects underwent MEG and fMRI scan at the Nanjing Brain Hospital (NBH), Nanjing Medical University. All participants gave their written informed consent to participate in the experiments; all procedures were approved by NBH Committee on Human Research.

B. Magnetoencephalographic Recordings

The participants were laying awake and with their eyes closed in a magnetically shielded room while their continuous resting state MEG was recorded with a 275-channel whole-head MEG system (VSM MedTech, Canada), using a sampling rate of 300 Hz. An artifact-free epoch of 2-minute duration was recorded for subsequent analysis in each patient and subject.

C. Imaginary Coherence

The coherence, measures the linear time-invariant relationship between two time series $x(t)$ and $y(t)$ at frequency λ , is defined as

$$\text{Coh}_{xy}(\lambda) = \left| R_{xy}(\lambda) \right|^2 = \frac{f_{xy}(\lambda)}{\sqrt{f_{xx}(\lambda)f_{yy}(\lambda)}} \quad (1)$$

Where $R_{xy}(\lambda)$ is the complex valued coherency of x and y , $f_{xy}(\lambda)$ is the cross-power spectral density (CPSD) of x and y , and $f_{xx}(\lambda)$ is the power spectral density (PSD) of x . Coherence is a positive function, and bounded by 0 and 1, where 0 indicates that x and y have no linear relationship, and 1 indicates that x and y have perfect linear relationship.

A 60 s duration raw MEG data was selected for subsequent analysis in each patient and subject. The raw MEG data were high-pass filtered with a cut-off frequency of 4 Hz and notch filtered at 50 Hz. CPSD of x and y was computed by using Welch's method [13]. The Fourier-transformed $X(\lambda)$ and $Y(\lambda)$ are used to compute the CPSD, $f_{xy}(\lambda) = X(\lambda) Y^*(\lambda)$, where Y^* denotes the complex conjugate of Y . X and Y were Hanning-windowed, each segment k was 2 s long and

S. Ge, HY. Tang, X. Xiao and W. Wu. Author are with the School of Electronic Engineering and Optoelectronic Technology, Nanjing University of Science and Technology, Nanjing, China (e-mail: shengge1@gmail.com).

T. Wu. Author is with the Department of Magnetoencephalography, Nanjing Brain Hospital, Nanjing Medical University, Nanjing, China.

K. Iramina. Author is with the Department of Intelligent Systems, Graduate School of Information Science and Electrical Engineering, Kyushu University, Fukuoka, Japan.

overlapped adjacent segments by 1 s. Finally, f_{xy} is averaged over the whole successive segments.

After calculating the complex valued coherence, then took the square value of the imaginary part of complex valued coherence as the imaginary coherence (IC):

$$IC_{xy}(\lambda) = \left| \text{imag}[R_{xy}(\lambda)] \right|^2 \quad (2)$$

All of the data analyses were performed using custom programs written in Matlab R2010a (Mathworks Inc., Natick, MA, USA).

III. RESULTS

Fig.1 shows the typical results for 2 patients and healthy control subjects:

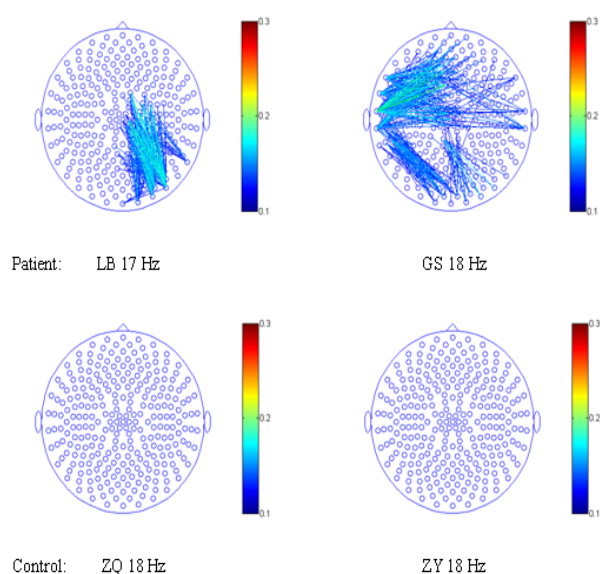


Fig.1 Patterns of imaginary coherence connectivity increased in the β band for patients than healthy control subjects (values below low threshold=0.1 will not be shown in the figure, while values beyond high threshold=0.3 will be shown as red line)

The MEG analysis for patients LB and GS shown MEG epileptic dipoles at right occipital lobe and left frontal lobe, respectively. According to the patterns of imaginary coherence connectivity shown in Fig.1, there is increased connectivity around 18 Hz over epileptic dipole locations for these two patients. However, there is no obvious connectivity for two healthy control subjects ZQ and ZY.

IV. DISCUSSION

Unlike previous coherence studies [8][9], which shown decreased connectivity over lesion locations, this study shown increased connectivity over epileptic focus. One reasonable explanation is that the previous studies investigated brain lesions (space-occupying brain lesions for [8], and brain tumors for [9]), the presence of lesions disrupting cortex and adjacent white matter the coherence between those areas and the remaining cortical areas are lower than normal due to

impairment of the fibers that connect the damaged areas with the rest of the brain. Although, the definite cause for epilepsy is not clear yet, unlike the space-occupying or necrosis tissues, some epilepsy cases have normal tissue structure [14] but characteristically abnormal rhythm which produced by excessive electrical discharges in the nerve cells. Our analysis results, in some extent, reflect this phenomenon, i.e., compared to the healthy control subjects, epilepsy patients tend to have abnormal rhythm brain connectivity over their epileptic focus.

REFERENCES

- [1] M. Hampson, B.S. Peterson, P. Skudlarski, J.C. Gatenby, J.C. Gore, "Detection of functional connectivity using temporal correlations in MR images," *Hum Brain Mapp.*, 15, pp.247-262, 2002.
- [2] C.F. Beckmann, M. DeLuca, J.T. Devlin, S.M. Smith, "Investigations into resting-state connectivity using independent component analysis," *Philos Trans R Soc Lond B Biol Sci*, 360, pp.1001-1013, 2005.
- [3] W.W. Seeley, V. Menon, A.F. Schatzberg, J. Keller, G.H. Glover, H. Kenna, A.L. Reiss, M.D. Greicius, "Dissociable intrinsic connectivity networks for salience processing and executive control," *J Neurosci*, 27, pp.2349-2356, 2007.
- [4] M.E. Raichle, A.M. MacLeod, A.Z. Snyder, W.J. Powers, D.A. Gusnard, G.L. Shulman, "A default mode of brain function," *Proc Natl Acad Sci USA*, 98, pp.676-682, 2001.
- [5] M.D. Greicius, B. Krasnow, A.L. Reiss, V. Menon, "Functional connectivity in the resting brain: A network analysis of the default mode hypothesis," *PNAS*, 7, 100(1), pp.253-258, 2003.
- [6] M.D. Greicius, K. Supekar, V. Menon, R.F. Dougherty, "Resting-state functional connectivity reflects structural connectivity in the default mode network," *Cerebral Cortex*, 19, pp.72-78, 2009.
- [7] M. Lowe, E. Beall, K. Sakaie, K. Koenig, L. Stone, R. Marrie, M. Phillips, "Resting state sensorimotor functional connectivity in multiple sclerosis inversely correlates with transcallosal motor pathway transverse diffusivity," *Hum Brain Mapp.*, 29(7), pp.818-827, 2008.
- [8] T. Harmony, E. Marosi, T. Fernández, J. Bernal, J. Silva, M. Rodríguez, A. Reyes, A. Fernández-Bouzas, M. Alonso, R. Mendizábal, et al., "EEG coherences in patients with brain lesions," *Int J Neurosci*, 74, pp.203-226, 1994.
- [9] F. Bartolomei, I. Bosma, M. Klein, J.C. Baayen, J.C. Reijneveld, T.J. Postma, J.J. Heimans, et al., "How do brain tumors alter functional connectivity? A magnetoencephalography study," *Ann Neurol*, 59, pp.128-138, 2006.
- [10] P.L. Nunez, R. Srinivasan, A.F. Westdorp, R.S. Wijesinghe, D.M. Tucker, R.B. Silberstein, P.J. Cadusch, "EEG coherency. I: Statistics, reference electrode, volume conduction, Laplacians, cortical imaging, and interpretation at multiple scales," *Lectroencephalogr Clin Neurophysiol*, 103, pp.499-515, 1997.
- [11] G. Nolte, O. Bai, L. Wheaton, Z. Mari, S. Vorbach, M. Hallett, "Identifying true brain interaction from EEG data using the imaginary part of coherency," *Clin Neurophysiol*, 115, pp.2292-2307, 2004.
- [12] T. Medkour, A.T. Walden, A.P. Burgess, "Graphical modelling for brain connectivity via partial coherence," *J Neurosc. Methods*, 180, pp.374-383, 2009.
- [13] P.D. Welch, "The use of fast Fourier transform for the estimation of power spectra: a method based on time averaging over short, modified periodograms," *IEEE Trans Audio Electroacoust.*, AU-15, pp.70-73, 1967.
- [14] A.M. Siegel, B.C. Jobst, V.M. Thadani, C.H. Rhodes, P.J. Lewis, D.W. Roberts, P.D. Williamson, "Medically intractable, localization-related epilepsy with normal MRI: presurgical evaluation and surgical outcome in 43 patients," *Epilepsia*, 42, 7, pp.883-888, 2001.

S. Ge He was born in 1975. He received the B.E. degree in 1997 from Nanjing University of Science and Technology, China. He received the M.E. and Ph.D. degrees from Yamaguchi University, Japan, in 2001 and 2004, respectively. From 2004 to 2005, he was a Research Assistant of Faculty of Engineering, Yamaguchi University. From 2005 to 2007, he was a COE Research Fellow of Kyushu University. He has been an Assistant Professor of Kyushu University in 2007. From 2007 to 2009, he was a Postdoctoral Scholar of Radiology Imaging Laboratory, The University of California, San Diego, USA. From 2009, he has been an Associate Professor of Nanjing University of Science and Technology, China. His research interests include cognitive science, brain function and neuroscience.

T. Wu She was born in 1975. She received the M.B. degree in 1998 from Chengde Medical University, China, and M.M. degree in 2003 from Southeast University, China, respectively. She worked as a Resident Physician in the Department of Neurology, The No.1 Hospital of Qinghuangdao from 1998 to 2000. From 2003 she worked as an Attending Physician in the MEG laboratory, Nanjing Brain Hospital. From 2007, she became the Director of MEG laboratory, Nanjing Brain Hospital. Her main research interests include schizophrenia, alzheimer, epilepsy and brain functional research with fMRI and MEG.

HY. Tang She was born in 1988. She received the B.E. degree in 2010 from Nanjing University of Science and Technology, China. She has been a master student of the same university from 2010. Her current research interest is brain functional research.

X. Xiao He was born in 1986. He received the B.E. degree in 2010 from Nanjing University of Science and Technology, China. He has been a master student of the same university from 2010. His current research interest is brain functional research.

K. Iramina He was born in 1962. He received the B.E. degree in Electronics Engineering in 1986 and the M.E. degree in Electronics Engineering in 1988 from Kyushu University. He received the Dr. of Engineering for his studies on biomagnetism in 1991 from Kyushu University, Japan. He was a Research Associate at Kyushu University in 1991. He became an Associate Professor at the faculty of Engineering, Kyushu University in 1994. He joined the Research Institute of Biomedical Engineering, University of Tokyo in 1996 as an Associate Professor. He has been a Professor of Graduate School of Information Science and Electrical Engineering, Kyushu University from 2004. From 2010, he became the Dean of Graduate School of Systems Life Sciences, Kyushu University. His main research interest lies on biomedical engineering, biomagnetism and functional imaging of the brain.

W. Wu He received the Ph.D. degree in electromagnetic field and microwave technology from Southeast University, Nanjing, China, in 1997. He is presently a Professor in school of Electronic Engineering and Optoelectronic Technology, and an Associate Director in Ministerial Key Laboratory of JGMT, Nanjing University of Science and Technology. He has received six times of Ministerial and Provincial-Level Science and Technology Awards, and has submitted five patent applications. He has authored and coauthored over sixty journal and conference papers. His current research interests include microwave and millimeter wave theories and technologies, microwave and millimeter wave detection and multi-mode compound detection.